

DURABLE THANKS TO SIMPLICITY

The functional, robust appearance of our Trailerjet high-pressure cleaning trailers characterises our approach to technology and the way in which our Trailerjets are constructed. Meclean's vision, that technology must be practical and that only functionality, reliability and good, fast service are important, results in a Trailerjet high-pressure cleaning trailer which very clearly reflects our professional and pragmatic outlook on technology.

Meclean consistently selects the best components and knows better than any other that unnecessary electronics do not add anything. Meclean opts for proven, mechanical technology

EXPERTS IN CUSTOM WORK

A Trailerjet can be fully adapted to the wishes of the user. The various versions, the extensive list of options (including, among others, SteamPLUS®, WeedPLUS®, SIR certification, integrated generator,...) together with the expertise of our technical team, make it possible for us to focus fully on the end-user's wishes.

Let our practical professionals help you put together your ideal Trailerjet!



IN-HOUSE ENGINEERING

All Trailerjets are developed in-house: from the very first idea on the drawing board to assembly in our own assembly plant.



DIFFERENT CLEANING TECHNIQUES COMPARED:

traditional (hot)water high-pressure cleaning, AquaPLUS® and SteamPLUS® 2.0

TECHNICAL COMPARISON	WATER (<100 °C)	AquaPLUS®	SteamPLUS® 2.0
Water	100% water	90% water	10% water
Steam	-	10% steam	90% steam
Temperature (max)	102 °C	110 °C	150 °C
Working pressure	0 - 250 bar	0 - 250 bar	0 - 250 bar

IN PRACTICE...	WATER (<100 °C)	AquaPLUS®	SteamPLUS® 2.0
Effective without cleaning detergents	X	✓✓	✓✓
Surface damage	XX	X	✓
Energy consumption	X	X	✓
Water consumption	X	X	✓✓ (-35%)
Physical strain user	X	✓	✓✓



Specifications

	Trailerjet 200/21		Trailerjet 350/18		Trailerjet 350/18		Trailerjet 500/15	
	L	XL	L	XL	L	XL	L	XL
Working pressure	200 bar	200 bar	350 bar	350 bar	350 bar	350 bar	500 bar	500 bar
Flow rate	21 L/min.	21 L/min.	18 L/min.	18 L/min.	18 L/min.	18 L/min.	15 L/min.	15 L/min.
Motor rating	16 kW	16 kW	16 kW	16 kW	19 kW	19 kW	19 kW	19 kW
Autom. RPM adjustment	✓	✓	✓	✓	✓	✓	✓	✓
Max. burner power	110 kW (12V)	110 kW (12V)	110 kW (12V)	110 kW (12V)	110 kW (12V)	110 kW (12V)	110 kW (12V)	110 kW (12V)
Max. water temperature	102 °C	102 °C	102 °C	102 °C	102 °C	102 °C	102 °C	102 °C
Capacity fuel tank	60 L	60 L	60 L	60 L	60 L	60 L	60 L	60 L
Capacity water tank	200 L	500 L	200 L	500 L	200 L	500 L	200 L	500 L
Stainless steel HP reel	45 mtr.	45 mtr.	45 mtr.	45 mtr.	45 mtr.	45 mtr.	45 mtr.	45 mtr.
Stainless steel LP reel	25 mtr.	25 mtr.	25 mtr.	25 mtr.	25 mtr.	25 mtr.	25 mtr.	25 mtr.
Registered weight	750 kg	1300 kg	750 kg	1300 kg	750 kg	1300 kg	750 kg	1300 kg
SteamPLUS®	option*	option*	option	option	option	option	option	option
WeedPLUS®	option	option	option	option	option	option	option	option
Generator 240V	option	option	-	-	option	option	-	-
Braked	-	✓	-	✓	-	✓	-	✓
Available as skid/built-on unit	✓	✓	✓	✓	✓	✓	✓	✓
Dimensions	Trailerjet L (L)300 x (W)170 x (H)150 cm / Trailerjet XL (L)300 x (W)170 x (H)175 cm							

* Model Trailerjet (L / XL) 200/21 gives up to 200 bar working pressure in SteamPLUS® 2.0 mode

Contact us for full list of options.



Quick and professional service...

With different service locations throughout Europe and availability of technicians worldwide we are able to guarantee a response time of max. 24 hours everywhere in the world. In most cases the service needs can be resolved within a couple of hours and often on location.

Top-notch quality

During development and production, meclean® only uses quality components such as a KUBOTA diesel engine, stainless steel burner system, stainless steel mounting material and no unnecessary electronics. This guarantees a long-term, worry-free deployment.



Warranty

- 2 years (in combination with service agreement)
- 10 years on high-pressure pump head

Lease or buy?

Leasing can be an interesting option. Please feel free to ask your dealer or meclean®. You can calculate an estimated monthly term on meclean.eu/leasen Please be aware that this is just an indication and it will differ per country

Demonstration?

Do you want to see our Trailerjet high-pressure cleaning trailer in full action? Contact your dealer or meclean to schedule a demonstration on location.

Sales & service:

meclean® • functional cleaning power | t: +31 (0)115 43 25 30 | info@meclean.eu | www.meclean.eu



meclean®
functional cleaning power



Trailerjet - L / XL

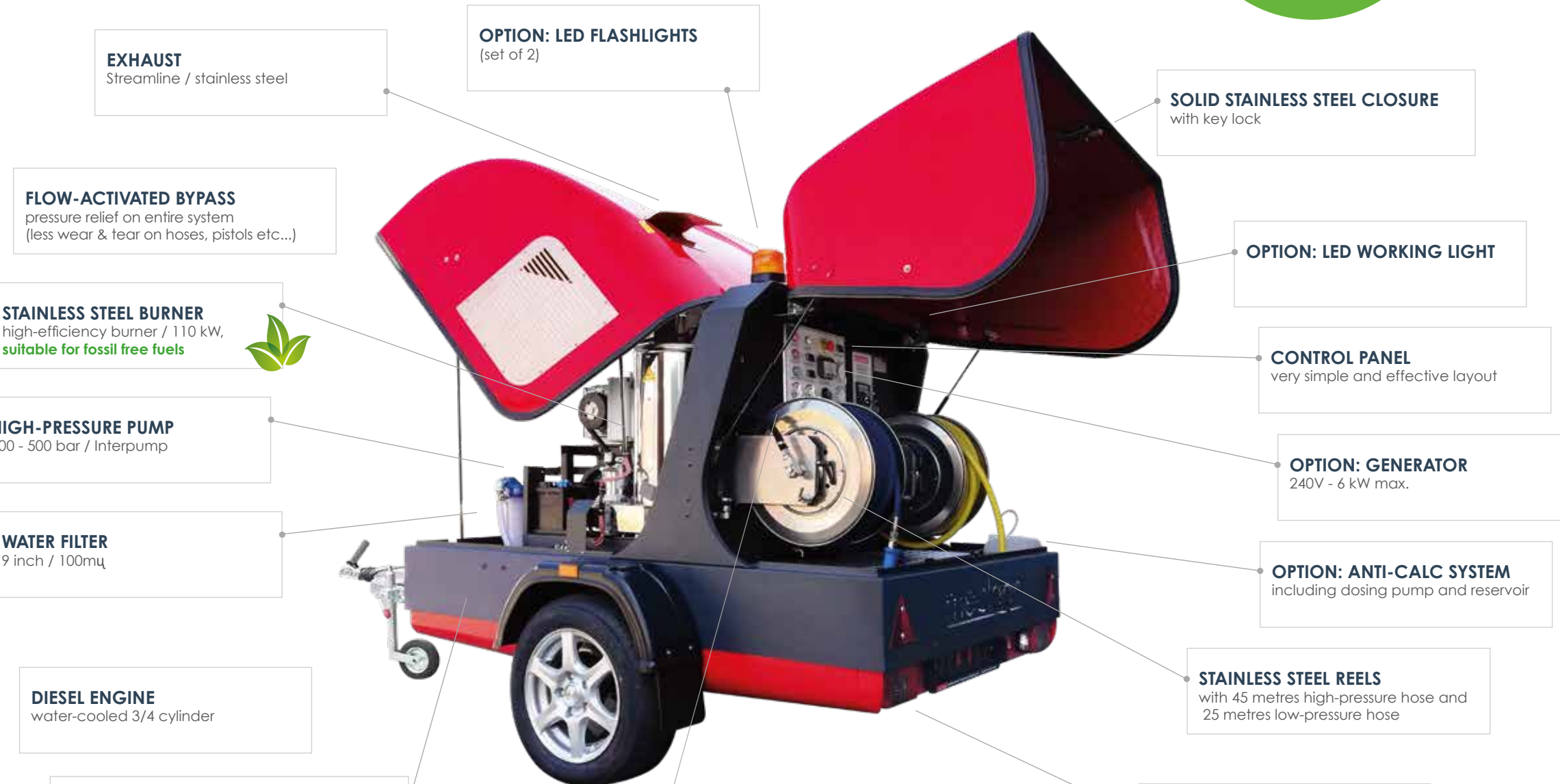
RUNS ENTIRELY ON
HVO100
Fossil-free fuel
up to 90% less emission



Unique design & proven mechanical technique ...

Trailerjet-L / XL

... without unnecessary electronics



EXHAUST
Streamline / stainless steel

OPTION: LED FLASHLIGHTS
(set of 2)

SOLID STAINLESS STEEL CLOSURE
with key lock

FLOW-ACTIVATED BYPASS
pressure relief on entire system
(less wear & tear on hoses, pistols etc...)

OPTION: LED WORKING LIGHT

STAINLESS STEEL BURNER
high-efficiency burner / 110 kW,
suitable for fossil free fuels

CONTROL PANEL
very simple and effective layout

HIGH-PRESSURE PUMP
200 - 500 bar / Interpump

OPTION: GENERATOR
240V - 6 kW max.

WATER FILTER
9 inch / 100µ

OPTION: ANTI-CALC SYSTEM
including dosing pump and reservoir

DIESEL ENGINE
water-cooled 3/4 cylinder

STAINLESS STEEL REELS
with 45 metres high-pressure hose and
25 metres low-pressure hose

WATER TANK
standard 200 L / XL-version 500 L,
divided into compartments to avoid swinging

FUEL TANK
capacity 60 L

OPTION: SteamPLUS[®] 2.0
high-pressure steam technique, activated by
simply pressing the button.

OPTION: AquaPLUS[®]
surface cleaning technique, activated by
simply pressing the button.

OPTION: WeedPLUS[®]
for ecologic weed control, activated by simply
pressing the button.

SteamPLUS[®] 2.0

SteamPLUS[®] is a patented cleaning function that consists of a **balanced mix of 90% steam and 10% water** and a stabilized temperature of 150 °C in combination with an adjustable working pressure up to 250 bar.

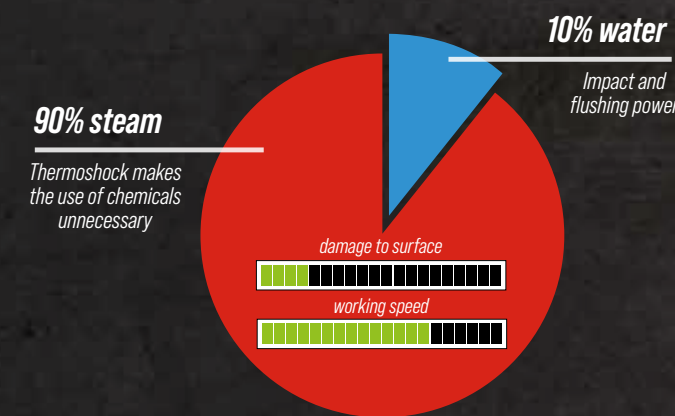
SteamPLUS[®] can easily be switched on and of with a button on the control panel.

With an additional steam / heat exchanger 17,000 liters of steam is produced. This enormous amount of steam creates a "thermoshock" which causes the pollution to come off without damaging the surface. The steam pressure (adjustable up to 250 bar) gives working speed that is necessary for large objects/ buildings.

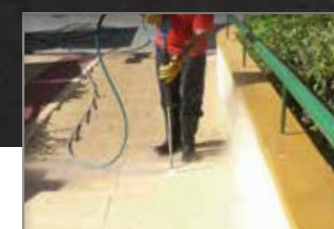
SteamPLUS[®] is used and recommended by companies that are specialized in facade cleaning of monumental buildings.

Where and when SteamPLUS[®] ?

- ✓ When chemicals can not be used and the surface is susceptible to damage
- ✓ SteamPLUS[®] is suitable - unlike AquaPLUS[®] - for damagesensitive surfaces such as facades with less strong joints, monumental buildings, sandstone objects, wooden objects, etc.
- ✓ SteamPLUS[®] removes graffiti, paint layers, chewing gum, atmospheric pollution, algae and moss, fungi, oil and resin, adhesive layers, road markings, etc. without chemicals
- ✓ Disinfection and odor control thanks to the high steam percentage



Facade cleaning: without chemicals and damage



Chewing gum removal: in less than 2 seconds (2.000 - 3.000 pieces per hour)

AquaPLUS[®]

AquaPLUS[®] is a mix of **90% water and 10% steam** that comes out of the spray lance at a stabilized temperature of 110 °C and an adjustable pressure up to 250 bar.

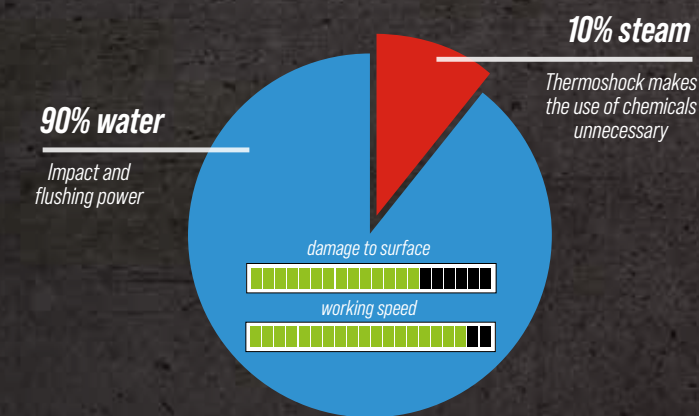
AquaPLUS[®] can easily be switched on and of with a button on the control panel*

*AquaPLUS[®] is only possible in combination with SteamPLUS[®]

AquaPLUS[®] is a cleaning function inbetween traditional (hot) water high pressure and SteamPLUS[®]. The balanced mix of superheated water and steam take advantage of both mentioned functions. Water provides impact and flushing power and the fairly low steam amount still creates a limited thermoshock effect so no chemicals are needed for perfect cleaning results.

Where and when AquaPLUS[®] ?

- ✓ When no chemicals can be used and the surface is not susceptible to damage
- ✓ AquaPLUS[®] in some cases cleans at a higher speed than SteamPLUS[®], because the percentage of water is higher. However, the high water percentage also causes more damage to the surface compared to SteamPLUS[®]
- ✓ AquaPLUS[®] is suitable for industrial cleaning and removes graffiti, paint layers, atmospheric pollution, resin, glue layers, road markings, etc. without chemicals



Facade cleaning



Graffiti removal: without chemicals

WeedPLUS[®]

WeedPLUS[®] is a hot water weed control function. WeedPLUS[®] works with pure, clean (drinking) water, no pesticides needed. By overheating the weed plant proteins coagulate and are clogging the cells, which leads to effective and environmental-friendly weed control.

WeedPLUS[®] can easily be switched on and of with a button on the control panel.

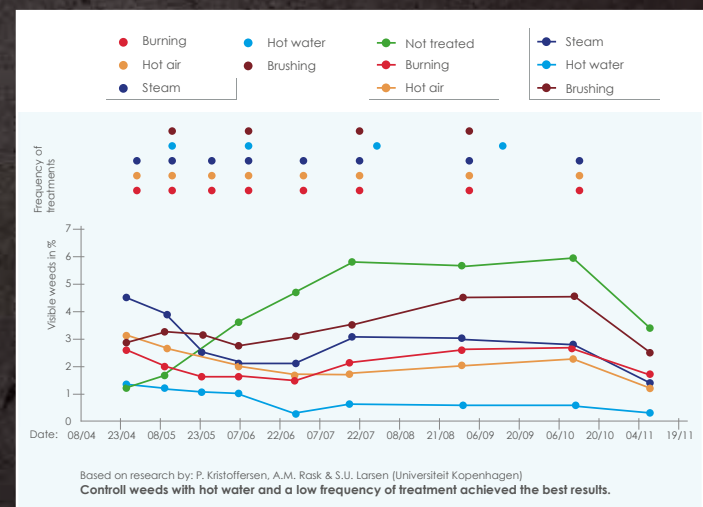
Fighting weeds with WeedPLUS[®] is possible everywhere. With the shower nozzle and spray bar on wheels it is possible to work extremely selectively without collateral damage.

Because the working speed is up to 30% higher than other alternative weed control methods and up to 60% fewer treatments are required, WeedPLUS[®] is also economically the best alternative. With WeedPLUS[®] a maximum of 2,000 m² per hour can be controlled.

Proven to be most effective

- ✓ Only 4 treatments per year (compared to 8 treatments with hot air / burning)
- ✓ Substantially lower weed percentage throughout the year (compared to all other methods)

Fighting weeds with hot water has been carried out by the University of Copenhagen (research by Prof. P. Kristoffersen) researched and is clearly the most effective alternative weed control method (see diagram below):



Weeds on pavement



Weeds on pavement 2 - 5 days after treatment



meclean[®] is a SIR (Stichting Industriële Reiniging) member. If desired a High-pressure cleaning trailer can be delivered with SIR certification.



SteamPLUS[®] 2.0 and AquaPLUS[®] comply with all applicable laws and regulations such as PED (Pressure Equipment Directive) and are safe for users according to the rules included in the Working Conditions Act